



**Funeral Services Inc.**

**Price Guide**

**Effective as of July 1, 2023**

1666 King Street East, Cambridge, ON. N3H 3R7

Phone: (519) 650 – 1565

License # FE-1388

**[Tranquilityfuneralservice.com](http://Tranquilityfuneralservice.com)**

**Chris Silverthorne** – Owner and Funeral Director

**Holly Vickovich** – Managing Funeral Director

H.S.T. (13%) applicable to all services and merchandise

## Explanation of Services and Prices

- **Co-ordinating rites & ceremonies** \$600 (Funeral Service) \$500 (Direct Cremation or Burial)  
Professional consultation with licensed staff, including but not limited to: expert advice on options to meet your needs, co-ordination of all activities, rites and ceremonies, before, during and after they have been provided, including services and supplies provided by us, as well as those provided by third party suppliers, such as flowers and catering.
- **Documentation** \$375 (Funeral Service) \$350 (Direct Cremation or Burial) \$700 (Shipping Service) Completion and filing of all documents necessary to carry out the services and supplies requested, including but not limited to death registration, burial permit, coroners' certificate for cremation, documentation necessary to ship remains out of the country, provision of 12 proof of death certificates from Tranquility.  
Please note: Our proof of death certificates are usually accepted for most estate settlement purposes, but sometimes a provincial "Certified Death Certificate" will be necessary and is available from the Office of the Registrar General, or online at [www.ontario.ca](http://www.ontario.ca).
- **Transport remains** \$150  
Transportation of remains from one place to another, for example the hospital to Tranquility, or Tranquility to the crematorium or cemetery.
- **Transfer surcharge** \$280  
This fee is charged in addition to the regular transfer fee. This is applicable when a transfer either requires 2 staff members, or from a nursing home, home, hospice or retirement home. This is a 24 hour service.
- **Basic preparation of remains** \$200  
The preparation of the body for placement into the casket, including bathing, dressing and the setting of facial features for identification or viewing without embalming. (Requires facilities for preparation/embalming/shelter).
- **Embalming of remains** \$300  
(This is in addition to basic preparation of remains.) Embalming is the process of replacing blood and bodily fluids with chemical preservatives. It is a process of sanitation, restoration and temporary preservation. Embalming is not required by law, but it is our funeral home policy to insist on embalming if visitation is to be public, and an open casket. Our professional Funeral Directors will make recommendations based on the condition of the body and circumstances regarding the ceremony or rite.
- **Facilities for preparation, embalming, shelter of remains** \$100  
Shelter of remains at our facilities from the time of initial transfer until the time of disposition.
- **Staff services for visitation/ceremony** \$600 (Memorial Service up to 1.5 hours, no body present) \$1295 (Funeral Service up to 4 hours) \$1945 (Funeral Service up to 6 hours)  
Staff to co-ordinate and oversee the visitation (informal gathering), ceremony or memorial service.
- **Transport of remains to cemetery/crematorium** \$125 (Funeral Service only)  
Transportation of remains in a casket or container to the cemetery or crematorium for disposition. If a funeral coach is used instead, this fee is not charged. In the case of direct cremation or burial this fee is not charged.
- **Transport of remains to Airport** \$125  
Transportation of remains in a casket or air tray to the departing airport after documentation is complete.
- **Funeral coach (Hearse)** \$550  
A funeral coach is the traditional vehicle that is used to transport a casket to a church, chapel, cemetery or crematorium. 3-hour use is included. Overtime charges may apply for use over 3 hours at a rate of \$100 for every hour of overtime. Coach is required for all burials and church services.
- **Lead car / Clergy car** \$350  
A lead car is a sedan that is used to either lead a funeral procession, or transport clergy from one place to another. 3-hour use is included. Overtime charges may apply for use over 3 hours at a rate of \$100 per hour of overtime.
- **Limousine** \$650  
Limousine service is a vehicle that is used to transport up to 7 passengers to a ceremony or memorial service, and to a cemetery or post-funeral reception. 3-hour use is included, and the overtime rate is \$125 per hour.
- **Scattering of cremated remains** \$500  
We will scatter cremated remains in accordance with Ontario and municipal laws and by-laws on land. Our staff fee for scattering in open water or on land.

## Additional Services

Funeral Coach (3 hour use)	\$550
Coach overtime (charged per hour)	\$125
Clergy Car / Lead Car (3 hour use)	\$350
Clergy Car / Lead Car overtime (charged per hour)	\$100
Flower Vehicle	\$125
7 Passenger Limousine (3 hour use)	\$650
Limousine overtime (charged per hour)	\$125
Staff for Witnessing of Cremation	\$175
Memorial Cards (Folded)	\$2 Each
Weekend Service Surcharge for services	\$200
Register Book	\$40
Priority Cremation/Burial (within 24 hours of death)	\$250
Pallbearer Assistance (per person)	\$180
Mileage Fee (charged after first 75 kms)	\$3/km
Transfer of deceased from Residence, Hospice, Nursing Home (24 hours a day) in addition to Regular transfer fee	\$280
Staff for Post-Funeral Reception	\$200
Staff for Obtaining Certified Death Certificates	\$200
Storage Fee per day after four (4) days	\$60
Air Tray	\$600
½ Glass Sealer	\$1000
Delivery of Cremated Remains (within 50 kms)	\$75
Shipment of Cremated Remains within Ontario	\$125
Shipment of Cremated Remains within Canada	\$200
Infectious Disease Embalming Kit	\$275
Handling of Infectious Remains	\$175
Cosmetic Application (no embalming)	\$200
Body Containment Pouch	\$125
Scattering of Cremated Remains	\$500
Staff for Obtaining Documentation from Consulate	\$200
Handling of remains 350 lbs or over	\$400

***(This fee is regardless of the place of death)***

## Explanation of Disbursements

- **Municipal Death Registration Fee** – This fee is charged by the local municipal government to register the death.
- **Clergy Honorarium** – This is an amount of money paid to the clergy for their services.
- **Coroner's Cremation Certificate Fee** – Cremation is an irreversible form of disposition, therefore, an Ontario Coroner must approve the cremation with a certificate before cremation can take place.
- **Coroner's Out of Province Fee** – This is a fee charged by the coroner for issuing a certificate that allows cremation to take place, or to allow a body to be shipped outside the province of Ontario.
- **BAO Consumer Protection Fee** – In order to provide its services of information on your options in bereavement services, and to regulate the profession, making sure the law is consistently followed.

## Disbursements (NO H.S.T.)

Items arranged and paid for by us on your behalf. You are required to pay for these items at the time the contract is entered into. The following is a list of items that are often identified as disbursements.

Municipal Death Registration Fee	\$35
Coroner's Cremation Certificate	\$75
Coroner's Out of Province Certificate	\$75
BAO Consumer Protection Fee	\$30
Clergy Honorarium	<i>Price Varies</i>

**Below you will find examples of commonly selected services and prices. Please note that all services require either a casket or cremation container in addition to the services. These are not packages but can be used as an accurate way to estimate service costs.**

## Full Service Funeral (One Day Service)

A full service funeral option that includes: staff for visitation (2 hour visitation period with a 2 hour service to follow at chapel or church), consulting, planning, arranging, administration, embalming, other preparation, shelter, transfer to funeral home and death certificates. Listed below are the itemized charges. Please note that a rental fee for facilities may be in addition to this option. Facility charges will be handled as a disbursement at cost. Please ask your Funeral Director for location options. Other disbursements are additional.

### Professional & Staff Services:

Co-ordinating rites & ceremonies	\$600
Documentation – permits, forms, etc.	\$375
Transport of remains – Initial (75 km)	\$150
Basic preparation of remains	\$200
Embalming	\$300
Facilities for preparation, embalming, shelter	\$100
Staff services for Visitation/Ceremony (4 hours)	\$ 650
Transport of remains to cemetery/crematorium	<u>\$125</u>
<b>Total</b>	<b>\$2, 500</b>



## Full Service Funeral (Two Day Service)

A full service funeral option that includes: Staff for visitation (up to 4 hours of visitation with a 2 hour service the following day at a chapel or church), consulting, planning, arranging, administration, embalming, other preparation, shelter, transfer to funeral home and death certificates. Please note that a rental fee for facilities may be in addition to this option. Facility charges will be handled as a disbursement at cost. Please ask your Funeral Director for location options. Other disbursements are additional.

### Professional & Staff Services:

Co-ordinating rites & ceremonies	\$600
Documentation – permits, forms, etc.	\$375
Transport of remains – Initial (75 km)	\$150
Basic preparation of remains	\$200
Embalming	\$300
Facilities for preparation, embalming, shelter	\$100
Staff services for visitation/ceremony (6 hours)	\$950
Transport of remains to cemetery/crematorium	<u>\$125</u>
<b>Total</b>	<b>\$2, 800</b>

## Shipping Service

This service is for shipment of human remains to another province or out of the country. This does not include visitation or funeral services before shipment, Airfare, consulate fees, and any other fees or disbursements in regard to shipment of the remains.

### Professional & Staff Services:

Co-ordinating rites and shipment	\$950
Documentation – permits, forms, etc.	\$700
Transport of remains – Initial (75 km)	\$150
Basic preparation of remains	\$200
Embalming	\$300
Facilities for preparation, embalming, shelter	\$100
Transport of remains to Airport	\$125
Staff for obtaining Certified Death Certificates	<u>\$200</u>
<b>Total</b>	<b>\$2, 725</b>

## Direct Cremation/Burial

A direct cremation or burial includes all necessary documentation, staffing and vehicles. There are no funeral services or religious services included in this package. Disbursements are additional.

### Professional & Staff Services

Co-ordinating activities	\$500
Documentation – permits, forms, etc.	\$350
Transport remains – Initial (75 km)	\$150
Facilities to shelter remains	<u>\$150</u>
<b>Total</b>	<b>\$1,150</b>

## Memorial Service/Graveside Service

This package includes all necessary documentation and staffing of memorial service or graveside service to take place at a chapel, church or cemetery up to 1.5 hours. Disbursements are additional.

### Professional & Staff Services

Co-ordinating rites & ceremonies	\$500
Documentation – permits, forms, etc.	\$350
Transport of remains – Initial (75 km)	\$150
Basic preparation of remains	\$200
Facilities to shelter remains	\$100
Staff services for ceremony (up to 1.5 hours)	\$600
Transport of remains to cemetery/crematorium	<u>\$125</u>
<b>Total</b>	<b>\$2,025</b>

## Casket Selection



### **Toledo**

**Price: \$900**

Victoriaville DR220-00040

Exterior: Blue Cloth

Interior: White Silk

Dimensions: 79.5L-25W-16.5H



### **Alder**

**Price: \$1150**

Victoriaville PV272-00005

Exterior: Woodgrain

Interior: Beige Crepe

Dimensions: 81.7L-29W-19.7H



### **Bailey Silver**

**Price: \$1325**

Victoriaville MR260-00110

Exterior Material: 20 gauge Steel,  
Silver Colour

Interior Material: Silver Crepe

Dimensions: 83.8L-28.8W-23H

*Also available in white*



**Puma**

**Price: \$1,490**

Victoriaville WR252-00180-CC

Exterior: Solid Poplar and Veneer,  
Rustic Brown Colour, Satin Finish

Interior: Beige Crepe

Dimensions: 81L-27W-20H



**Fergus**

**Price: \$1,500**

Victoriaville WR252-00084-CC

Exterior: Solid Poplar and Veneer,  
Rustic Brown Colour, Satin Finish

Interior: Beige Crepe

Dimensions: 80.9L-29.1W-19.7H



**Alfred**

**Price: \$1500**

Victoriaville WR252-00085-CC

Exterior: Solid Poplar and Veneer,  
Titian Colour, Satin Finish

Interior: Beige Crepe

Dimensions: 80.9L-29.1W-19.7H



**Borealis**

**Price: \$1550**

Victoriaville WR232-00359

Exterior: Solid Ash and Veneer,  
Topaz Colour, Satin Finish

Interior: Beige Crepe

Dimensions: 81.1L-27.1W-20.1H



**Ashton**

**Price: \$1575**

Victoriaville WR232-00418-CC

Exterior: Ash and Veneer, Fawn  
Colour, Satin Finish

Interior: Beige Crepe

Dimensions: 82.2L-28.4W-20.5H



**Payne Copper**

**Price: \$1600**

Victoriaville MR260-00056

Exterior: 20 gauge Steel,  
Copper Colour/Finish

Interior: Tan Crepe

Dimensions: 83.8L-28.8W-23H



**Payne Ebony Gold**

**Price: \$1600**

Victoriaville MR260-00102

Exterior: 20 gauge Steel, Ebony  
Shaded Gold Finish

Interior: White Crepe

Dimensions: 83.8L-28.8W-23H



**Payne Midnight Blue**

**Price: \$1600**

Victoriaville MR260-00058

Exterior: 20 gauge Steel, Midnight  
Blue Colour, Silver Finish

Interior: White Crepe

Dimensions: 83.8L-28.8W-23H



**Winfield**

**Price: \$1600**

Victoriaville W252-00052-CC

Exterior: Solid Poplar and Veneer,  
American Cherrywood Colour, Satin Finish

Interior: Tan Crepe

Dimensions: 82L-22.5W-27.9H



#### **Milword**

**Price: \$1600**

Victoriaville WR252-00262

Exterior: Solid Poplar and Veneer,  
Walnut Colour, Satin Finish

Interior: Tan Crepe

Dimensions: 82L-27.9W-22.5H



#### **Newington**

**Price: \$1625**

Victoriaville WC252-00008-CC

Exterior: Solid Poplar and Veneer,  
Fairmont Colour, High Gloss Finish

Interior: Tan Crepe

Dimenions: 82.4L-28.3W-22.5H



#### **Digby**

**Price: \$1700**

Victoriaville WR232-00429-CC

Exterior: Solid Ash and Veneer,  
Saffron Colour, Gloss Finish

Interior: Crepe

Dimensions: 82.2L-26.7W-20.5H



#### **Monarch Sandstone**

**Price: \$1850**

Victoriaville WR260-00082

Exterior: 20 gauge Steel,  
Sandstone Colour, Metallic Finish

Interior: Tan Crepe

Dimensions: 83.5L-28.6W-23H



#### **Monarch White**

**Price: \$1850**

Victoriaville WR260-00099

Exterior: 20 gauge Steel,  
White Colour

Interior: White Crepe

Dimensions: 83.5L-28.6W-23H



#### **Goldfinch Nest**

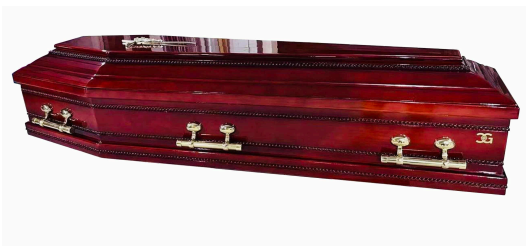
**Price: \$2300**

GC Coffins Model: N10-1

Exterior: Solid Pine, Light Stain

Interior: Natural Biodegradable Cotton

Dimensions: 13"H x 80"L x 26"W



#### **European Robin Nest**

**Price: \$2580**

GC Coffins Model: N20-2

Exterior: Solid Pine

Interior: Taffeta

Dimensions: 84L-28H



#### **Testament**

**Price: \$2500**

Victoriaville WR212-00055-CC

Exterior: Solid Oak and Veneer,  
Flax Colour, Satin Finish

Interior: Tan Crepe

Dimensions: 22.5"H x 82.4"L x 28.3"W



#### **Cognac Jewel**

**Price: \$2800**

Victoriaville MR250-00098

Exterior: Steel 18 ga., Brown Finish

Interior: Beige Velvet

Dimensions: 23"H x 83.5"L x 29"W

## Century Concrete Burial Vaults

(Standard dimensions, oversized available if required)

Intermediate Crypt	\$1300
Monarch Vault	\$1500
Monticello Vault	\$1900
Venetian	\$2400

### Note:

**Possession of Cremated Remains and Refundable Deposit:** When cremation is selected, the Provider may require the purchaser to pay a refundable deposit of \$350. The Provider will retain the cremated remains for one year from the date of cremation. If the cremated remains are not claimed within one year, the Provider may inter the cremated remains in a cemetery, including in a common lot for which the cemetery is the interment rights holder, and the Provider may retain the deposit referred to in this section. If the cremated remains are claimed before they are interred, the operator will refund any deposit paid.

### Payment

For at-need services, unless otherwise specified, payment is due on or before the day the services are completed. Payment may be made by cash, cheque, e-transfer, debit, Visa and MasterCard. As of November 1<sup>st</sup>, 2022, a fee of 2.4% for all credit card transactions is applicable. This fee is non-refundable in the event of a cancellation. Pre-need trust terms of payment: We allow up to 5 years on a pre-authorized scheduled time payment. If death occurs within the payment period, the balance must be paid in full on or before the day the services are completed.

### Cryptocurrency

As the leader in alternative funeral services in Ontario, we are pleased to announce that Tranquility Burial & Cremation Services is the first funeral home in Canada to accept the following cryptocurrencies: Bitcoin, Cash, Ethereum, Litecoin, Monero, Dash. We can only accept cryptocurrency for at-need services and merchandise, not including cremation fees or other disbursements. We cannot accept cryptocurrency for pre-payment of our services.

### Pre-Payment

Pre-payment is when you pre-pay for the services and supplies today and the money will be used to pay for the services and supplies when they are delivered at time of death.

- **Trust** – You may pay the money directly to us and we will place it in trust, where it will accrue interest until the contract is fulfilled (when services and supplies are delivered) or the contract is cancelled.

*(Additional information about our payment options is available upon request)*

# Locations

**Proudly licensed at all locations by:  
The Bereavement Authority of Ontario  
(647) 483-2645  
<http://www.thebao.ca/>**

For your convenience, we offer the following locations near you that are owned and operated by:  
Chris Silverthorne – Funeral Director – Owner & Founder

**Tranquility Burial & Cremation Services Inc.**  
276 St. Paul Avenue, Brantford, ON N3R 4M8  
(519) 757-1654  
License # TS-768

**Tranquility Burial & Cremation Services Inc.**  
1666 King Street East, Cambridge, ON N3H 3R7  
(519) 650 – 1565  
License # FE-1388

**Tranquility Burial & Cremation Services Inc.**  
14-2390 Haines Road, Mississauga, ON L4Y 1Y6  
(905) 855 – 7565  
License # TS-705

**Tranquility Funeral Services Inc.**  
A division of Tranquility Burial & Cremation Services Inc.  
14-2390 Haines Road, Mississauga, ON L4Y 1Y6  
(905) 855 – 7565  
License # FE-1001